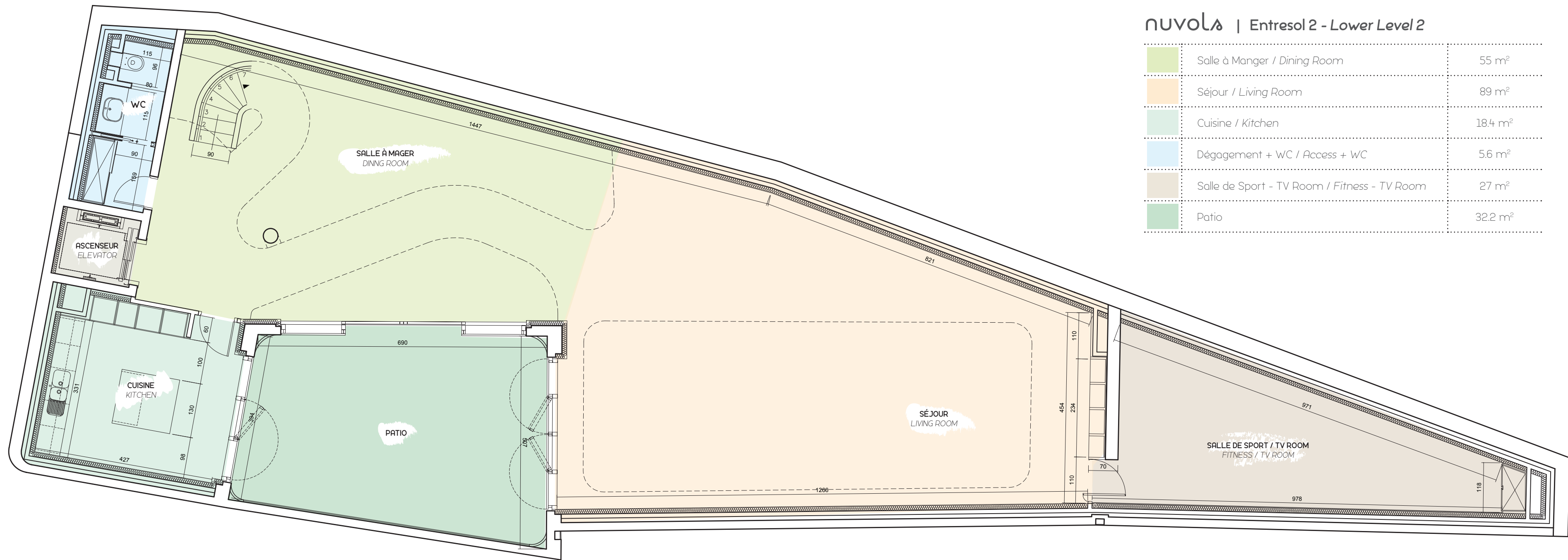




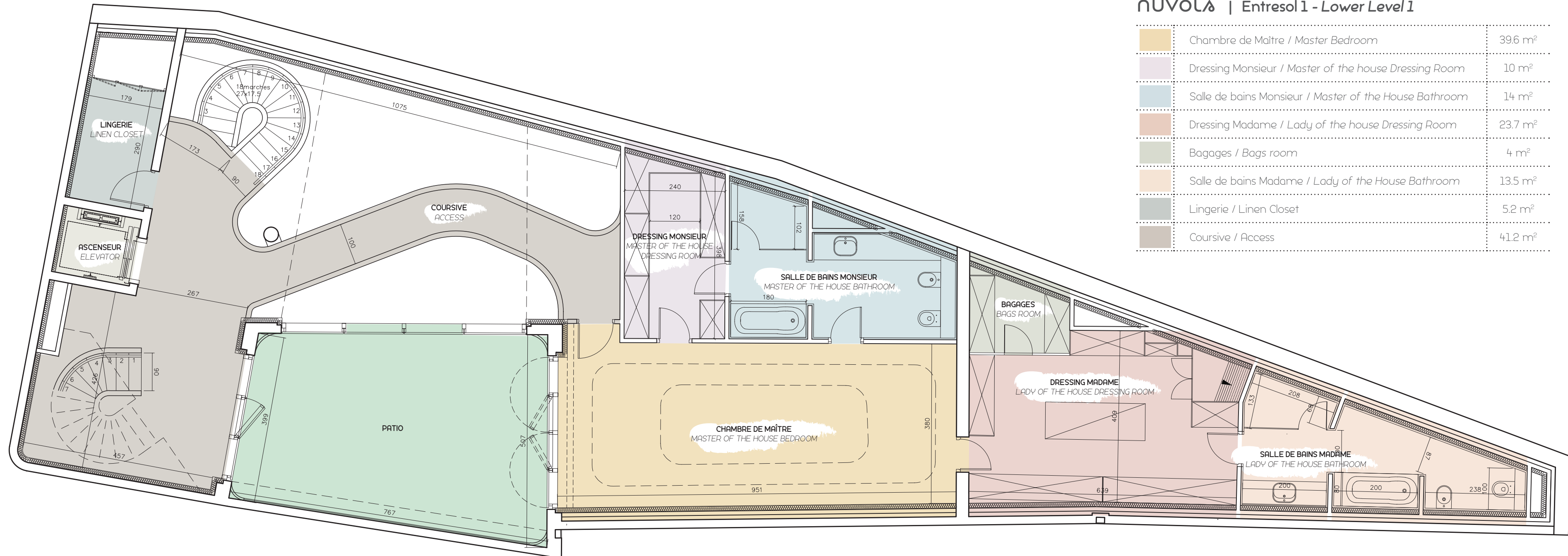
nuvola  
CARNET DE PLANS





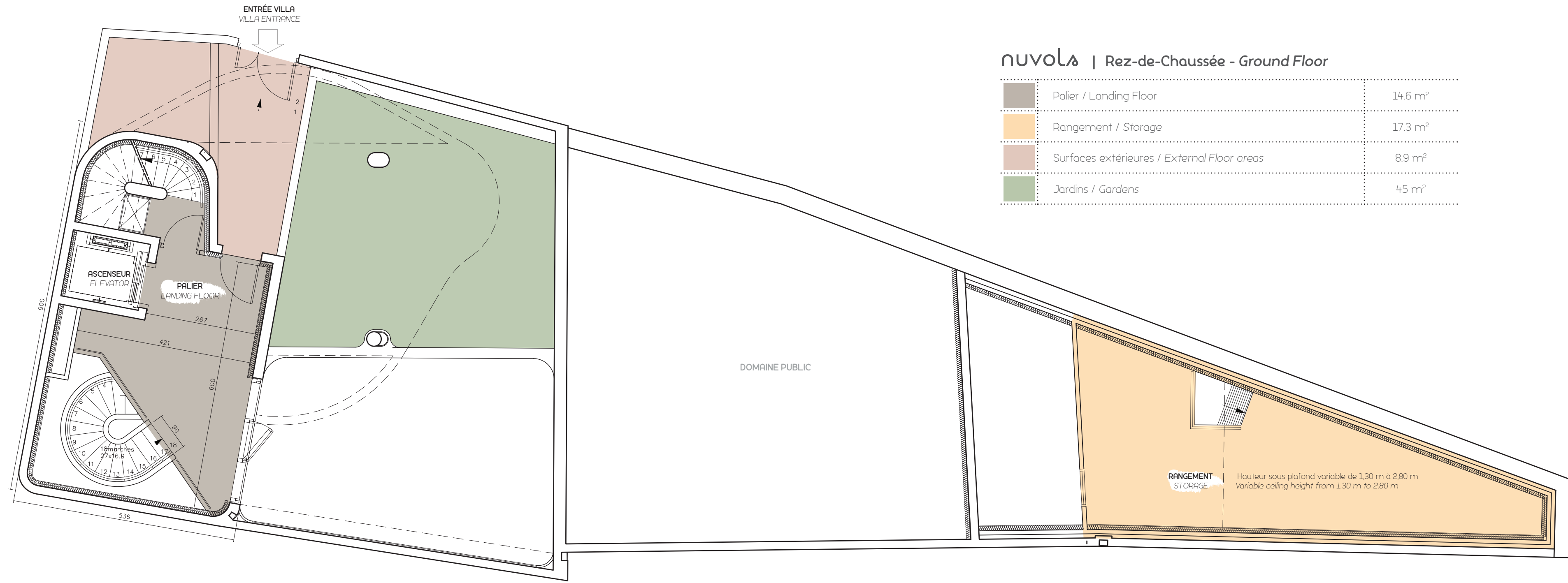
nuvola | Entresol 2 - Lower Level 2

<span style="color: #90EE90;">■</span>	Salle à Manger / Dining Room	55 m <sup>2</sup>
<span style="color: #FFDAB9;">■</span>	Séjour / Living Room	89 m <sup>2</sup>
<span style="color: #90EE90;">■</span>	Cuisine / Kitchen	18.4 m <sup>2</sup>
<span style="color: #ADD8E6;">■</span>	Dégagement + WC / Access + WC	5.6 m <sup>2</sup>
<span style="color: #D2B48C;">■</span>	Salle de Sport - TV Room / Fitness - TV Room	27 m <sup>2</sup>
<span style="color: #3CB371;">■</span>	Patio	32.2 m <sup>2</sup>



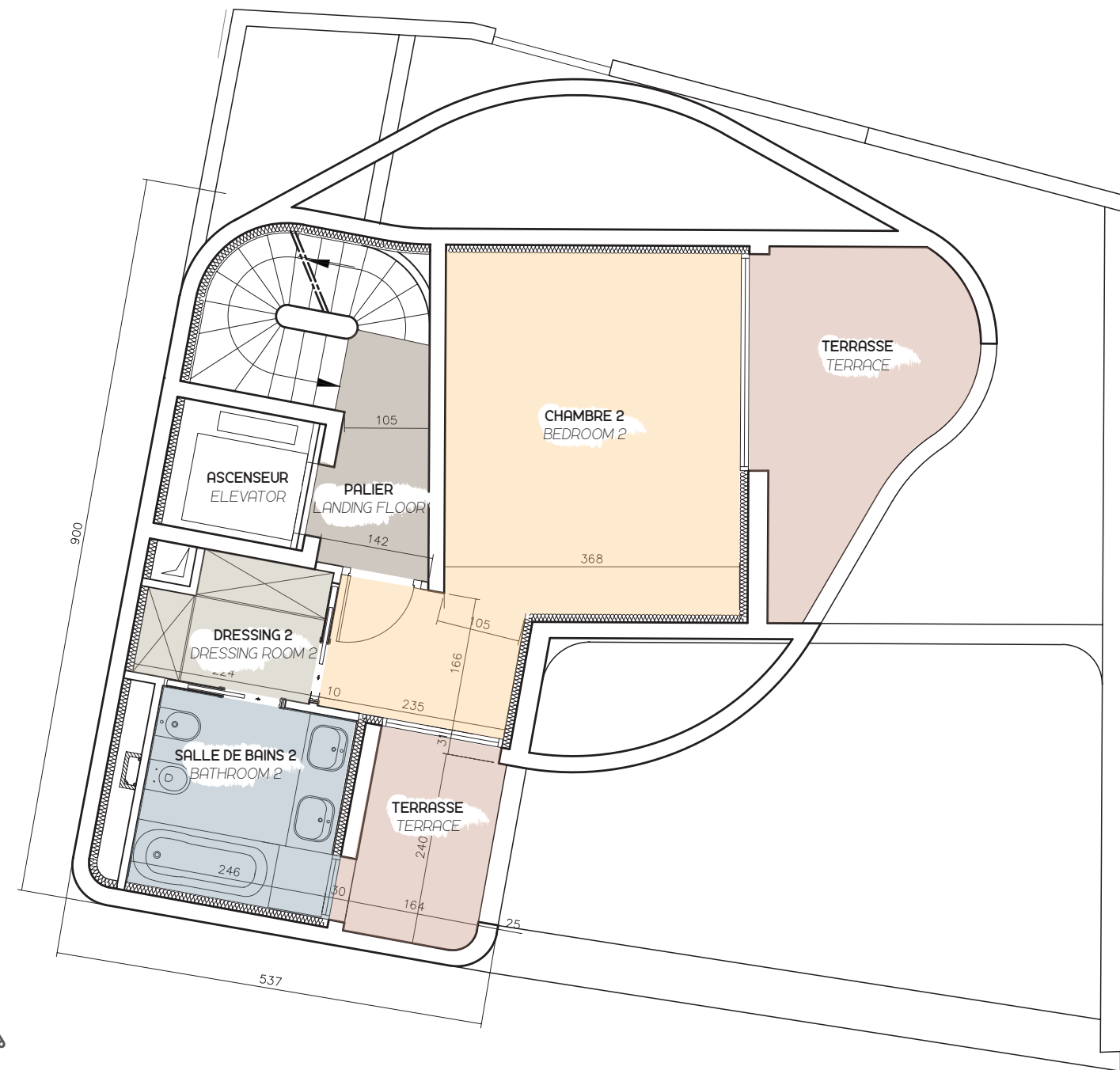
nuvola | Entresol 1 - Lower Level 1

	Chambre de Maître / Master Bedroom	39.6 m <sup>2</sup>
	Dressing Monsieur / Master of the house Dressing Room	10 m <sup>2</sup>
	Salle de bains Monsieur / Master of the House Bathroom	14 m <sup>2</sup>
	Dressing Madame / Lady of the house Dressing Room	23.7 m <sup>2</sup>
	Bagages / Bags room	4 m <sup>2</sup>
	Salle de bains Madame / Lady of the House Bathroom	13.5 m <sup>2</sup>
	Lingerie / Linen Closet	5.2 m <sup>2</sup>
	Coursive / Access	41.2 m <sup>2</sup>

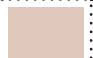


nuvola | Rez-de-Chaussée - Ground Floor

	Palier / Landing Floor	14.6 m <sup>2</sup>
	Rangement / Storage	17.3 m <sup>2</sup>
	Surfaces extérieures / External Floor areas	8.9 m <sup>2</sup>
	Jardins / Gardens	45 m <sup>2</sup>





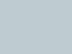


nuvola | Premier étage - First Floor

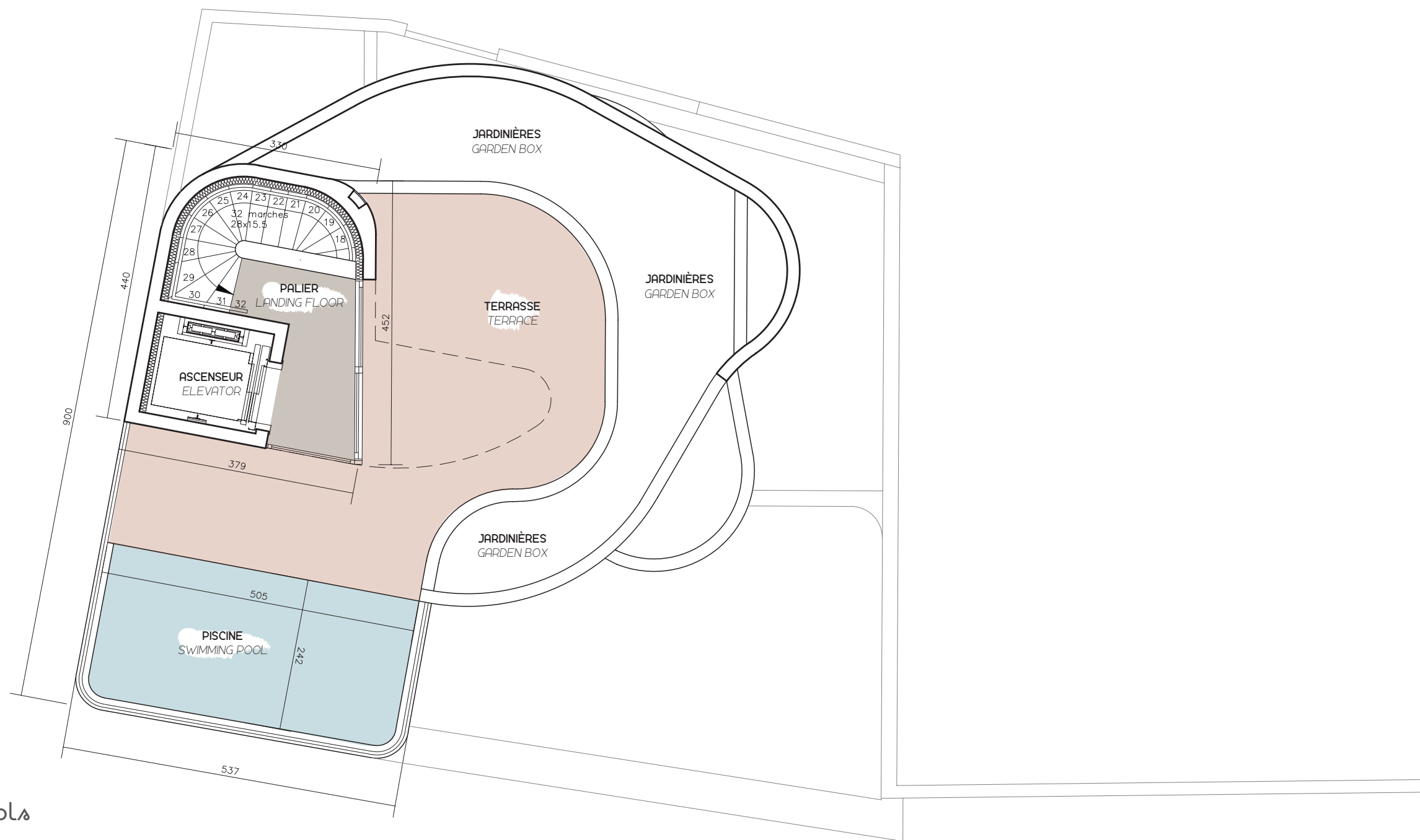
	Chambre 2 / Bedroom 2	20.3 m <sup>2</sup>
	Dressing 2 / Dressing Room 2	3.1 m <sup>2</sup>
	Salle de bains 2 / Bathroom 2	6.8 m <sup>2</sup>
	Palier / Landing Floor	3.7 m <sup>2</sup>
	Terrasses / Terraces	13.1 m <sup>2</sup>

DOMAINE PUBLIC



### nuvola | Deuxième étage - Second Floor

	Chambre 3 / Bedroom 3	20.3 m <sup>2</sup>
	Dressing 3 / Dressing Room 3	3.1 m <sup>2</sup>
	Salle de bains 3 / Bathroom 3	6.8 m <sup>2</sup>
	Palier / Landing Floor	3.7 m <sup>2</sup>
	Terrasses / Terraces	11.2 m <sup>2</sup>



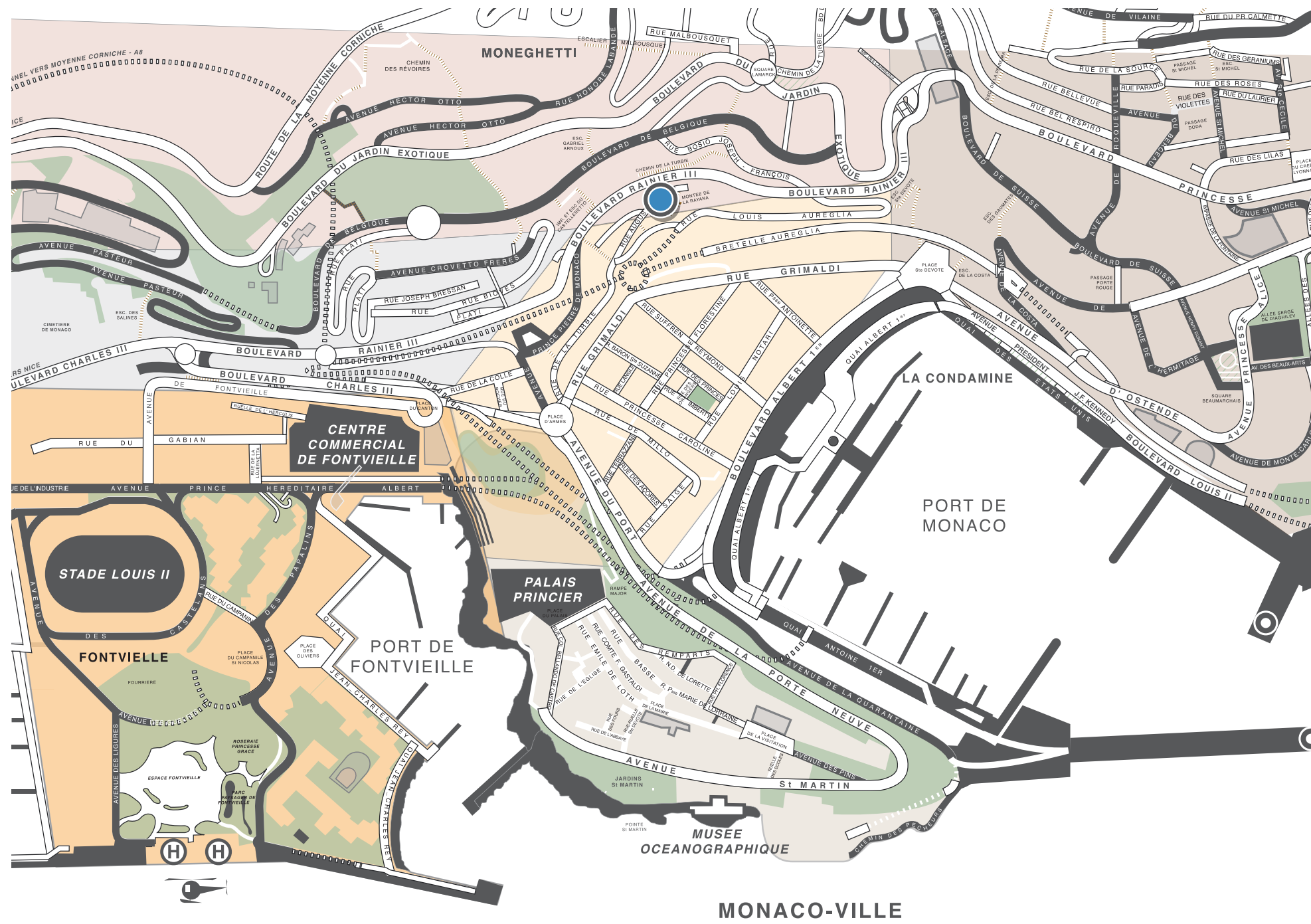
### nuvola | Toit Terrasse - Roof-Terrace

	Palier / Landing Floor	4 m <sup>2</sup>
	Terasse / Terrace	27 m <sup>2</sup>
	Piscine / Swimming pool	12 m <sup>2</sup>



**NUVOLA** | Récapitulatif des Surfaces - *Floor area schedule*

Entresol 2 / <i>Lower Level 2</i>	269 m <sup>2</sup>
Entresol 1 / <i>Lower Level 1</i>	197 m <sup>2</sup>
Rez-de-Chaussée / <i>Ground Floor</i>	120 m <sup>2</sup>
Premier étage / <i>First Floor</i>	67 m <sup>2</sup>
Deuxième étage / <i>Second Floor</i>	65 m <sup>2</sup>
Toit Terrasse / <i>Roof Terrace</i>	81 m <sup>2</sup>
<b>TOTAL - Total Floor Areas</b>	<b>799 m<sup>2</sup></b>



Villa à la scénographie résolument contemporaine, Nuvola réinvente le riad en plein cœur de la Principauté. En y apportant une indispensable touche de modernité, elle devient innovante et singulière pour vous offrir une expérience de vie sans commune mesure.

Hors-norme, ses espaces généreux, son cadre intimiste, son exotisme contemporain ou encore son originalité architecturale constituent autant d'éléments qui font de cette villa un objet unique qui bouleverse les codes établis et qui saura ravir une clientèle qui, elle aussi, est hors-norme.

*Nuvola, a villa with a thoroughly contemporary design, has brought the riad up-to-date right in the heart of the Principality. By adding an essential dash of modernity, it has been transformed into an innovative and singular home, offering you an incomparable life experience.*

*Quite simply extraordinary, the generous rooms, intimate setting, contemporary exoticism and even the architectural originality, all combine to make this villa an unique property which shatters conventions to delight a very select clientele.*

ÉCHELLE / SCALE  
 0 100 200 300 400 500 mètres